
The logo for Blue Sky Network features a large, stylized blue swoosh that starts at the top left, curves upwards and to the right, then loops back down and to the left, ending in a thin tail. The text "Blue Sky Network" is positioned in the center of the swoosh.

Blue Sky Network

HawkEye (PT) Plus Manager

User Guide
Document Part 200253
Revision 1.3

NOTICE

This guide is published and copyrighted by Blue Sky Network (BSN). All information and specifications in this document are subject to change without notice. Nothing in this document is intended to create additional or separate warranties or guarantees.

© 2013 Blue Sky Network, All Right Reserved.



Blue Sky Network, 5333 Mission Center Rd. Suite 220, San Diego, CA 92108

Phone: +1 858 551 3894 | Fax: +1 858 225 0794

E: support@blueskynetwork.com | W: www.blueskynetwork.com

TABLE OF CONTENTS

Notice2

Table of Contents3

Introduction4

System Requirements4

Setup Wizard5

 Remove/Uninstall6

Connect7

The HawkEye (PT) Plus Manager8

 File Menu8

 Setup Menu9

 Device Details9

 Owner Details10

 Settings10

 Profiles12

 Messages14

 Address Book15

 Call Out16

 Canned Messages17

 Way Points19

 Tracking Log19

 GPS19

 GeoFence20

 Motion22

Appendix A – Revision History24

Service Activations25

Support26

INTRODUCTION

The information contained in this User Guide describes the features, functions, technical characteristics, components, installation considerations and setup procedures for Blue Sky Network's HawkEye (PT) Plus Manger application.

NOTE: Information, drawings and wiring diagrams contained in this User Guide are intended as a reference for engineering planning only. Drawings and wiring diagrams contained herein do not represent any specific vehicle installation.

This guide is applicable to the following components:

Component Name	Component Description
HawkEye (PT) Plus Manager	HawkEye (PT) Plus Manager Application

SYSTEM REQUIREMENTS

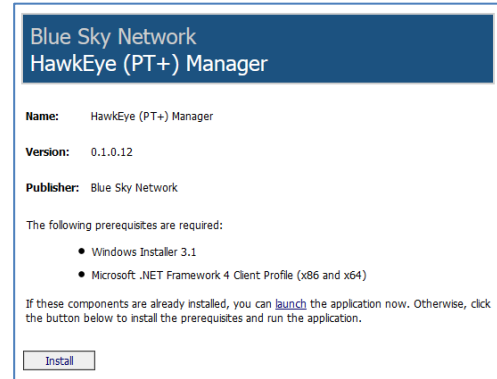
We recommend that the HawkEye (PT) Plus Manager application be installed on a system that meets the following system requirements:

- Windows XP Home Edition or later.
- 1 (GHz) processor or faster
- At least 512 megabytes (MB) of RAM
- At least 2 gigabytes (GB) on the hard disk
- Keyboard and a compatible pointing device
- Video adapter and monitor with Super VGA (800 x 600) or higher resolution
- Microsoft Internet Explorer 6.0 or later
- .Net framework 4.0 or later

SETUP WIZARD

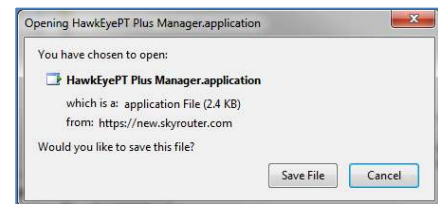
The HawkEye (PT) Plus Manager can be downloaded by clicking the “The HawkEye (PT) Plus Manager” hyperlink in the secure documents section of SkyRouter, secure documents can be found under the “Documents” link in SkyRouter Classic, or the “Support” link in New SkyRouter.

1. Upon clicking the hyperlink your browser should direct you to the following page, click the “Install” button to start downloading the installer.

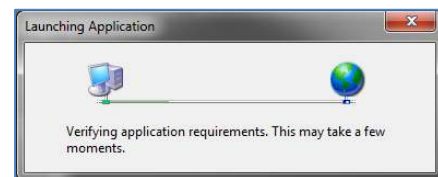


2. Per the pre-installation warning message, the following components are required, if these components are not installed click “install” to install them:
 - a. Windows Installer 3.1
 - b. Microsoft .NET Framework 4 Client Profile (x86 or x64)

3. If the components are already installed; click “Launch” to download the “HawkEyePT Plus Manger.application”, we recommend saving the file to a location where you will be able to find it (such as the desktop).



4. “HawkEyePT Plus Manger.application” automates the installation of the HawkEye (PT) Plus Manger; double click the installer file to begin installation, the installer will first check to see if there are any updates available and that the current version of the installer is the latest available.



5. Once the application is updated and the installation begins you may be presented with a security warning prompting to verify the application publisher, click “Install” to continue; the necessary files are downloaded and the application is installed.

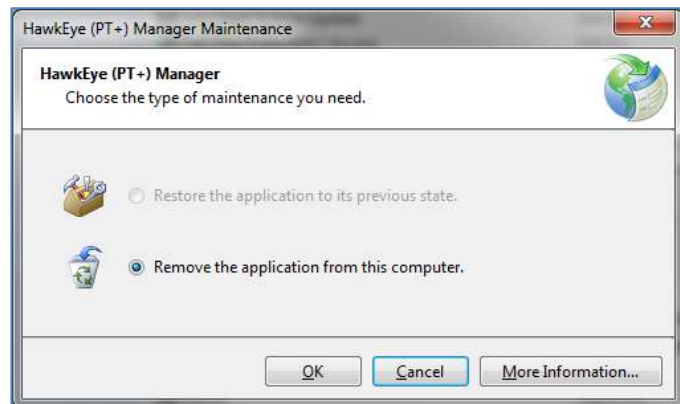
By default the HawkEye (PT) Plus Manager shortcut is installed in All Programs\Blue Sky Network\Device Managers\HawkEye (PT) Plus Manager



REMOVE/UNINSTALL

The HawkEye (PT) Plus Manager should be uninstalled from the Control Panel as with other Windows applications.

1. From Control Panel > Programs and Features, right click the application and select "Uninstall"
2. Select "Remove the application from this computer"
3. Click OK to begin uninstalling



CONNECT

In order to connect your HawkEye (PT) Plus to your computer you will need a USB-to-Micro USB cable:



(From left to right) USB-to-Mini USB cable, HawkEye (PT) Plus Micro USB port.

To initiate the connection between your HawkEye (PT) Plus and computer:

1. Run the HawkEye (PT) Plus Manager
2. Turn off your HawkEye (PT) Plus
3. Insert the USB connector into an available USB port on your computer
4. Insert the USB Micro connector into the USB Micro port on your HawkEye (PT) Plus
5. HawkEye (PT) Plus enters "Configuration Mode"
6. If you see a "green check mark" icon (right) in the "Connection Status" section of the HawkEye Management application you are now connected:
7. If you see a "red cross" icon (right) in the "Connection Status" section of the HawkEye management application and you are still not connected; power off the HawkEye (PT) Plus, the device powers off and initiates the connection.

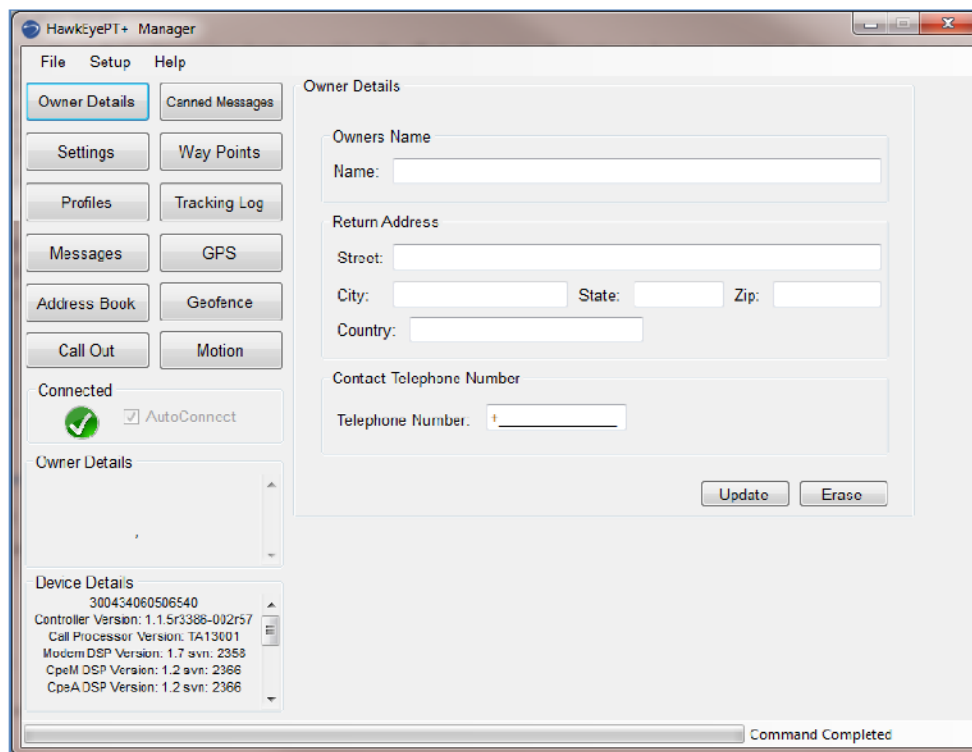


THE HAWKEYE (PT) PLUS MANAGER

The HawkEye (PT) Plus Manager is compatible with the New SkyRouter system only:

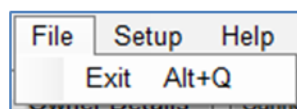
The HawkEye (PT) Plus Manager allows you to view, edit and manage settings and information contained on your HawkEye (PT) Plus device with the use of a Personal Computer. The HawkEye (PT) Plus Manager also allows you to sync your Address Book and Canned Messages with the New SkyRouter Servers.

Once you have ran the “HawkEyePT+ Manager” application and successfully connected to your HawkEye (PT) Plus device you will be presented with the following window:



Screenshot of the HawkEye (PT) Plus Manager full window

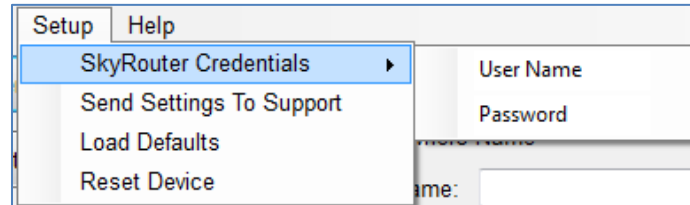
FILE MENU



EXIT

Closes the HawkEye (PT) Plus Manager application immediately.

SETUP MENU



SKYROUTER CREDENTIALS

It is a requirement that users authenticate with the New SkyRouter “Corporate Administrator” username and password in order to synchronize the “Address Book” and “Canned Messages” with the New SkyRouter Servers. Enter your New SkyRouter Credentials under the Setup Menu.

SEND SETTINGS TO SUPPORT

This option will export your HawkEye (PT) Plus configurations to a text format; you can then send these settings to support if your Technical Support representative has requested this.

LOAD DEFAULTS

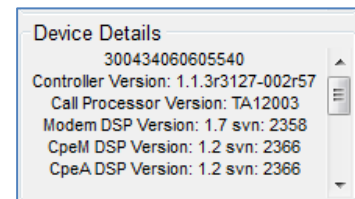
This option will load the BSN Default settings onto the device; these are the baseline settings which are recommended by BSN to ensure intended operation of your device; these settings also update the APN on the device. If you are using a SIM not issued by BSN you will need to update your APN values after loading the default settings.

RESET DEVICE

Selecting this option will reset your device to factory settings (not recommended unless you are experiencing issues with the device or a BSN Technical Support representative has requested this). Once your device has been reset we recommend using “Load Defaults to Device” directly after.

DEVICE DETAILS

The “Device Details” section of the HawkEye (PT) Plus Manager shows detailed device information such as the IMEI number and firmware (Controller) version, you may need to provide the information contained in this section when speaking to a Blue Sky Network Technical Support representative.



OWNER DETAILS

The “Owner Details” page allows you to update your personal information onto your HawkEye (PT) Plus).

To enter Owner Details into your HawkEye (PT) Plus device; simply fill out the fields and press the “Update” button to upload the changes to your HawkEye (PT) Plus.

If the information in the “Owner Details” page is incorrect you can use the “Erase” button to clear the information contained in all fields. After clicking Erase you must also click “Update” to commit the erased values to the device.

SETTINGS

The “Settings” page allows you to modify device level settings and customizations such as Date/Time, LCD and LED behavior and APN:

DATE FORMAT

FORMAT

The date format that is displayed on the HawkEye (PT) Plus device screen, available formats are:

- DD-MON-YY
- DD/MM/YY
- DD-MM-YY
- DD.MM.YY
- MM/DD/YY
- YY/MM/DD

TIME FORMAT

FORMAT

The time format that is displayed on the HawkEye (PT) Plus device screen. The following time formats are available:

- 24 Hour (Default)
- AM/PM

TIME ZONE

The time zone which is used on the HawkEye (PT) Plus device screen, available values are -14 through +14.

LCD

BACKLIGHT

Changes the way the Liquid Crystal Display backlight will behave, the following values are available:

- 5 Seconds
- 10 Seconds
- 15 Seconds
- 30 Seconds(Default)
- Always On
- Always Off

CONTRAST

Adjust the LCD contrast by sliding the slider bar, acceptable values are 0-10.

LED

The HawkEye (PT) Plus has a built-in LED (Light Emitting Diode), modifying the LED setting will change the way that the LED behaves (when it will function). To enable or disable an LED setting press the corresponding radio button; the following options are available:

- 5 Seconds
- 30 Seconds(Default)

GSM (ADVANCED SETTINGS)

APN

APN (Access Point Name) is the name of the gateway between your GPRS mobile network provider and the public internet; the APN is unique to your provider and must be obtained from your GPRS/GSM provider. Please note that some providers have multiple APNs; the HawkEye (PT) Plus default APN is m2m.t-mobile.com (for use with BSN provided SIM cards.)

AUTH

The authentication type required for a secured APN; obtain this information from your GPRS/GSM provider.

USERNAME/PASSWORD

Some carrier APNs require a username and password, these "secure" APNs are supported by the HawkEye (PT) Plus and can be entered from the Manager; the values for APN password can only be updated here (once entered it cannot be read.)

UPDATE

Press the "Update" button to commit any changes to your HawkEye (PT) Plus device.

PROFILES

The Profiles page provides an interface where users can configure various profiles which can change the way that the HawkEye (PT) Plus device will report.

The HawkEye (PT) Plus supports up to 11 fully customizable reporting profiles. Select a Profile from the drop-down list to begin configuring a profile. When profiles have been modified the user must remember to press “Update Device” to save any changes, otherwise the changes will be lost when the device is unplugged.

The default Profile configuration is; Profile 0 set as Normal tracking mode, Profile 1 set as Emergency tracking mode.

LINK

DEFAULT LINK

Set the default link using the radio button, the available default links are GSM and Iridium.

LINKS AVAILABLE

Set the available links by checking the box next to the appropriate link type you wish to make available, the available links are GSM and Iridium.

LINK SWITCH TIMEOUT

This is the time that the device will try to acquire signal in the default Link before switching to the backup Link. The Link Switch Timeout is not configurable and is set by default to 1 minute.

GPS

BLOCK TRANSMISSION OF INVALID GPS DATA

Prevents transmission of invalid or bad GPS data to the New SkyRouter servers; check the checkbox to enable this parameter, uncheck the checkbox to disable it.

TRACKING EVENT REPORTS (EMERGENCY/NORMAL)

INTERVAL (MINUTES)

Allows the user to adjust the interval or “how often” the device will send a report (when enabled). Use the up/down arrows to increase/decrease the interval; you can also manually type the interval into the field. Accepted values are 2-10080 (minutes).

TRANSMISSION TIME LIMIT (MINUTES)

Allows the user to adjust the how long the device will attempt to deliver the report if the first attempt was not successful (there was no signal). Move the slider bar in a horizontal plane to adjust this parameter. If this parameter is set to “0” the device will continue to attempt delivery indefinitely.

QUEUE FAILED REPORTS

Causes the device to queue any position reports that the device was unable to send (due to weak or no signals). Check this option to enable queuing, uncheck to disable.

ENABLE MOTION BASED EVENTS

Enables HawkEye PT Plus Motion sensor; this setting must be enabled in order to utilize features from the “Motion” tab.

REPORTS TO TRANSMIT IMMEDIATELY UPON ACTIVATION

When enabled, this setting will cause the device to send a flood of reports when a profile is activated. Profiles are activated when the device changes between Normal Tracking mode to QuickPosition mode, and vice versa. The available settings are:

- 1-10 reports
- 25 reports

CANCEL EMERGENCY

Press the “Cancel Emergency” button to cancel the emergency or “Quick Position” feature (if currently enabled) on the HawkEye (PT) Plus device.

PROFILE SELECTION

NORMAL TRACKING PROFILE

The tracking Profile that will be used while the device is in Normal Tracking mode. Select a Profile from the drop-down menu; the default “Normal” tracking profile is 0.

EMERGENCY TRACKING PROFILE

The tracking Profile that will be used while the device is in QuickPosition/Emergency mode. Select a Profile from the drop-down menu; the default “Emergency” tracking profile is 1.

RELOAD FROM DEVICE

Click this button to reload the profile settings from your HawkEye (PT) Plus device (discards any changes you have made to profiles).

UPDATE

When you have finished modifying the Parameters; press the “Update” button to upload the changes to your HawkEye (PT) Plus device.

MESSAGES

CONTROLS

Each mailbox uses the following control set to navigate through messages:



Skips to the end of the mailbox



Moves forwards one message



Skips to the beginning of the mailbox



Moves backwards one message

INBOX

Displays “Inbox” messages that are stored locally on the HawkEye (PT) Plus device (for viewing purposes only):

Inbox				Outbox	Drafts	Sent
1 of 2						
	View	Date Received	Sender	Message		
<input checked="" type="checkbox"/>		2013-06-19 10:14:41	Server	FROM: nsrtester@new...		
<input checked="" type="checkbox"/>		2013-06-19 10:15:23	Server	FROM: nsrtester@new...		

OUTBOX

Displays “Outbox” messages that are stored locally on the HawkEye (PT) Plus device (for viewing purposes only):

Inbox						Outbox	Drafts	Sent
1 of 3								
	Index	Priority	Pending	To:	Message			
<input checked="" type="checkbox"/>	0	3	<input type="checkbox"/>	Server	reporting in			
	1	1	<input type="checkbox"/>	Server				
	2	3	<input checked="" type="checkbox"/>	Server	camp			

DRAFTS

Displays “Draft” messages that are stored locally on the HawkEye (PT) Plus device (for viewing purposes only):

Inbox				Outbox	Drafts	Sent
1 of 2						
	Index	To:	Message			
<input checked="" type="checkbox"/>	1	Server	setting up camp here tonight			
	2	noc@blueskynetwork.com	waypoints at locations sent			

SENT

Displays “Sent” messages that are stored locally on the HawkEye (PT) Plus device (for viewing purposes only):

Inbox Outbox Drafts Sent			
1 of 5			
Date Sent	To:	Message	
2013-06-19 17:34:14	Server	reporting in	
2013-06-19 17:35:32	Server	this message is from d...	

ADDRESS BOOK


The Address Book allows you to store contact information such as email addresses, the email addresses can also be used as delivery addresses when sending messages from your HawkEye (PT) Plus.

AUTHENTICATION


In order to synchronize an address book with the New SkyRouter Servers it is a pre-requisite that the user authenticate with the Corporate Administrator New SkyRouter login. See “Setup menu” section.

4 of 4 Sync			
Name	Email Address	Contact Number	Location
Mathew	mathew@blueskyn...	858-551-3894	La Jolla
Support	Support@blueskyn...	858-551-3894	Worldwide
Tim	tim@blueskynetwo...	858-551-3894	La Jolla
Wade	wade@blueskyne...	858-551-3894	La Jolla
*			

ADD A CONTACT



1. Press the  icon to create a new contact, a new line is created.
2. Enter the contacts information into the fields (name, email, number, location).



DELETE A CONTACT

1. Select the contact row you wish to delete.
2. Press the  icon to delete the contact.

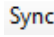
BROWSE THE ADDRESS BOOK

Navigate through the Address book using the arrow keys:

-  Skips to the end of the Address Book
-  Skips to the beginning of the Address Book

-  Moves forwards one contact
-  Moves backwards one contact

SYNC

To sync the modified Address Book with your Hawkeye (PT) Plus and the New SkyRouter servers simply press the  button (requires an internet connection).

SUCCESSFUL SYNC

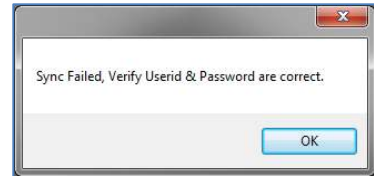
If your authentication credentials are correct you will see the following popup boxes indicating that synchronization was successful; validate at New SkyRouter that the synced data is there.



UNSUCCESSFUL SYNC

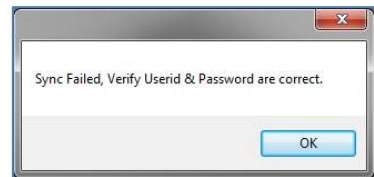
If your authentication credentials are invalid you will see a “Sync Failed” error indicating that synchronization was unsuccessful

In the event of an unsuccessful synchronization you should check the validity of your authentication credentials and ensure that you have a functioning internet connection.



USERDEVICE ASSOCIATION

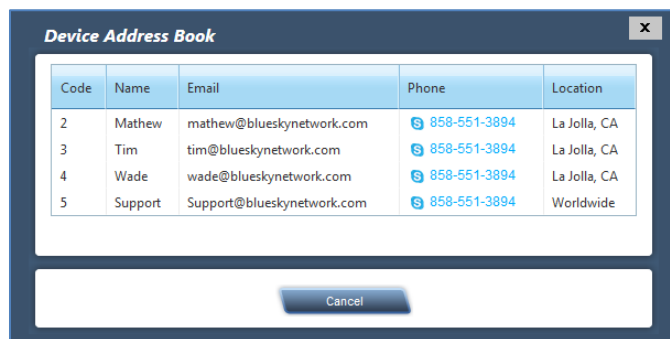
If the device you are trying to synchronize does is not associated with your Authentication Credentials you will see a “Sync Failed” error; In the event that this should happen you will want to make sure that you are using the New SkyRouter Corporate Administrator account that is associated with your HawkEye (PT) Plus device.



NEW SKYROUTER ADDRESS BOOK

Once your Address Book has been synchronized you will be able to see it in New SkyRouter, to do this:

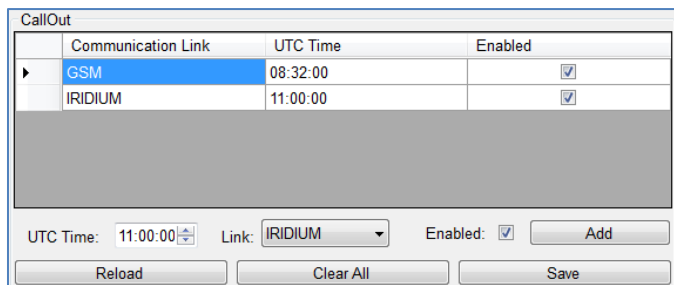
1. Login to your New SkyRouter Corporate Administrator account.
2. Navigate to “Manage” page.
3. Select the “Devices” tab.
4. Click “Device Information” for your HawkEye (PT) Plus device
5. Click the “Address Book” button, the synchronized Address Book is displayed (right)



CALL OUT

The CallOut feature allows users to configure times that the device will send a position report. CallOut is a useful feature for devices which are configured with a high Position Report Interval but are needed to report at specific times in the day.

UTC TIME



The time (in UTC) that the device will send the CallOut position report.

LINK

The link that is used to send the CallOut position report to New SkyRouter (Iridium or GSM).

ENABLED

Check to enable the CallOut, uncheck to disable.

ADD

This button will add the newly created CallOut to the CallOut list.

RELOAD

Reloads the settings which are already loaded to the device (this will erase any unsaved changes.)

CLEAR ALL

Clears all configured CallOuts from the CallOut list (you must click "Save" to update this on the device.)

SAVE

Saves and updates to the device all changes that have been made on the CallOut tab. If the Save button is not clicked any changes that have been made will be lost when the application is closed or the device is unplugged from the computer.

CANNED MESSAGES


The Canned Messages page allows you to create, modify and synchronize canned messages with the New SkyRouter Servers. Canned Messages are a set of pre-defined messages which can be sent easily without having to type the message.

	Label	Text
▶	Pickup	Need Pickup!
	Help!	Help! Help! I'm being repressed!
	Returning	Returning to base
*		


AUTHENTICATION

In order to synchronize Canned Messages with the New SkyRouter Servers it is a pre-requisite that the user authenticate with the Corporate Administrator New SkyRouter login. See "Setup menu" section.

ADD A CANNED MESSAGE

1. Press the  icon to create a new Canned Message, a new line is created.
2. Enter the Canned Message information into the fields.

DELETE A CANNED MESSAGE

1. Select the Canned Message row you wish to delete.
2. Press the  icon to delete the Canned Message.

BROWSE CANNED MESSAGES

Navigate through the Canned Messages using the arrow keys:



Skips to the end of the Canned Messages list



Moves forwards one Canned Message

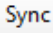


Skips to the beginning of the Canned Messages list



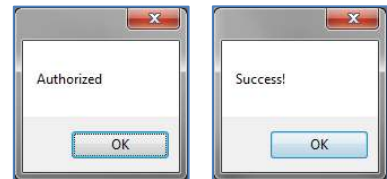
Moves backwards one Canned Message

SYNC

To sync the modified Canned Message list with your HawkEye (PT) Plus and the New SkyRouter servers simply press the  button (requires an internet connection).

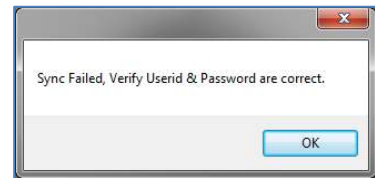
SUCCESSFUL SYNC

If your authentication credentials are correct you will see “Authorized” and “Success!” messages indicating that synchronization was successful; Validate at New SkyRouter that the synced data is there.



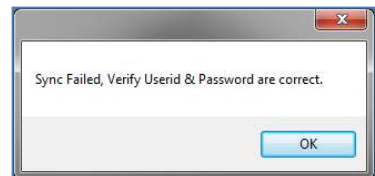
UNSUCCESSFUL SYNC

If your authentication credentials are invalid you will see a “Sync Failed” error; In the event of an unsuccessful synchronization you should check the validity of your authentication credentials and ensure that you have a functioning internet connection.



USERDEVICE ASSOCIATION

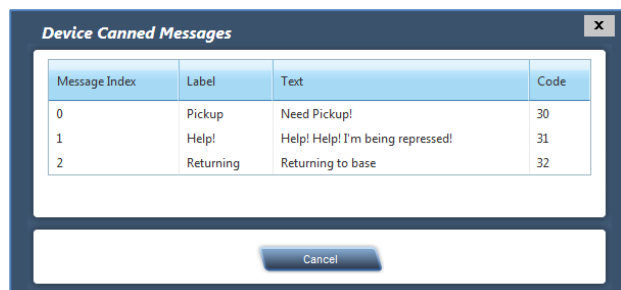
If the device you are trying to synchronize is not associated with your New SkyRouter account you will see a popup message indicating “Sync Failed”; In the event that this should happen you will want to make sure that you are using the New SkyRouter Corporate Administrator account.



NEW SKYROUTER CANNED MESSAGES

Once your Canned Message list has been synchronized you will be able to see it in New SkyRouter, to do this:

1. Login to your New SkyRouter Corporate Administrator account
2. Navigate to the “Manage” page
3. Select the “Devices” tab



Message Index	Label	Text	Code
0	Pickup	Need Pickup!	30
1	Help!	Help! Help! I'm being repressed!	31
2	Returning	Returning to base	32



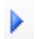

4. Click "Device Information" for your HawkEye(PT) Plus device
5. Click the "Canned Messages" button, the synchronized Canned Message list is displayed

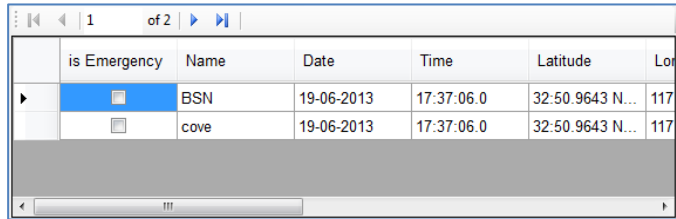
WAY POINTS

The "Way Points" page allows you to view Way Points that have been made from and are stored on your HawkEye (PT) Plus device; Way Points are read-only in the HawkEye (PT) Plus Manager. Waypoints which have been created on your device will also be sent to and appear in New SkyRouter.

BROWSE WAY POINTS

Navigate through the Way Points list by using the arrow keys:

-  Skips to the end of the Way Point list
-  Skips to the beginning of the Way Point list
-  Moves forwards one Way Point
-  Moves backwards Way Point





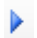

is Emergency	Name	Date	Time	Latitude	Longitude
<input type="checkbox"/>	BSN	19-06-2013	17:37:06.0	32:50.9643 N...	117:16.2422 ...
<input type="checkbox"/>	cove	19-06-2013	17:37:06.0	32:50.9643 N...	117:16.2422 ...

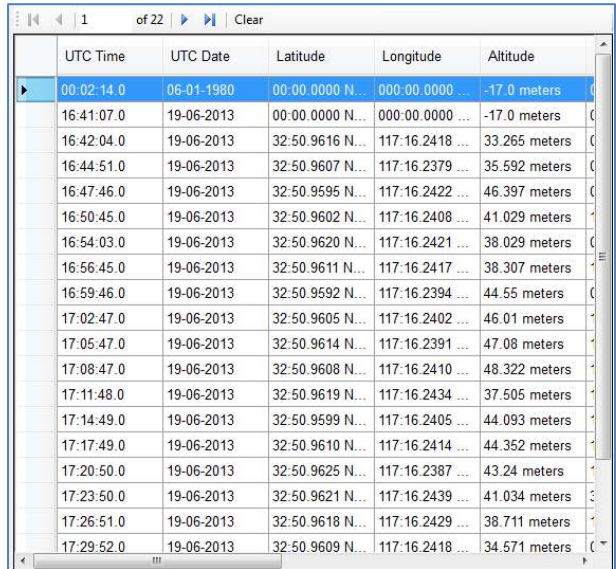
TRACKING LOG

The tracking log provides a historical view of position reports created on your HawkEye (PT) Plus device. The log is displayed in chronological descending order.

BROWSE THE TRACKING LOG

Navigate through the Tracking Log using the arrow keys:

-  Skips to the end of the Log
-  Skips to the beginning of the Log
-  Moves forwards one report
-  Moves backwards one report



UTC Time	UTC Date	Latitude	Longitude	Altitude
00:02:14.0	06-01-1980	00:00.0000 N...	000:00.0000 ...	-17.0 meters
16:41:07.0	19-06-2013	00:00.0000 N...	000:00.0000 ...	-17.0 meters
16:42:04.0	19-06-2013	32:50.9616 N...	117:16.2418 ...	33.265 meters
16:44:51.0	19-06-2013	32:50.9607 N...	117:16.2379 ...	35.592 meters
16:47:46.0	19-06-2013	32:50.9595 N...	117:16.2422 ...	46.397 meters
16:50:45.0	19-06-2013	32:50.9602 N...	117:16.2408 ...	41.029 meters
16:54:03.0	19-06-2013	32:50.9620 N...	117:16.2421 ...	38.029 meters
16:56:45.0	19-06-2013	32:50.9611 N...	117:16.2417 ...	38.307 meters
16:59:46.0	19-06-2013	32:50.9592 N...	117:16.2394 ...	44.55 meters
17:02:47.0	19-06-2013	32:50.9605 N...	117:16.2402 ...	46.01 meters
17:05:47.0	19-06-2013	32:50.9614 N...	117:16.2391 ...	47.08 meters
17:08:47.0	19-06-2013	32:50.9608 N...	117:16.2410 ...	48.322 meters
17:11:48.0	19-06-2013	32:50.9619 N...	117:16.2434 ...	37.505 meters
17:14:49.0	19-06-2013	32:50.9599 N...	117:16.2405 ...	44.093 meters
17:17:49.0	19-06-2013	32:50.9610 N...	117:16.2414 ...	44.352 meters
17:20:50.0	19-06-2013	32:50.9625 N...	117:16.2387 ...	43.24 meters
17:23:50.0	19-06-2013	32:50.9621 N...	117:16.2439 ...	41.034 meters
17:26:51.0	19-06-2013	32:50.9618 N...	117:16.2429 ...	38.711 meters
17:29:52.0	19-06-2013	32:50.9609 N...	117:16.2418 ...	34.571 meters

CLEAR THE TRACKING LOG

Press the **Clear** button to clear or delete the entire tracking log.

GPS

The GPS page allows the user to see the current GPS fix information, this information can either be updated at an automatic interval or manually.

AUTO-REFRESH

Sets the interval at which the GPS fix information will be populated into the “Details” section, the interval is in minutes and can be adjusted by moving the slider bar in a horizontal plane.

To enable Auto-Refresh of GPS data simply select the interval and press the button.

DETAILS

Shows the most recent GPS fix data available on the HawkEye (PT) Plus device.

UPDATE NOW

Click the button to instantly update the “Details” section with the HawkEye (PT) Plus device’s current GPS fix details.

GEOFENCE

The HawkEye (PT) Plus Manager has a built-in interface for managing GeoFences. HawkEye (PT) Plus GeoFences are **Device Side only**; this means that the GeoFences configured on the device will not be visible in New SkyRouter.

MAP CONTROLS

NEW

Create a new GeoFence. Click “New” to start creating a new GeoFence; this will also discard any unsaved changes to a previous GeoFence.

SAVE

Save a GeoFence. Click “Save” to save changes that you have made to the GeoFence. If changes are not saved they will be lost when the device is disconnected from the computer.

DELETE

Delete a GeoFence. Select an existing GeoFence using the “Edit” drop-down menu, click “Delete” to delete the selected GeoFence.

FLAGS

- Enter GeoFence:** When checked the device will send an “Enter GeoFence” event to New SkyRouter when entering a GeoFence.
- Exit GeoFence:** When checked the device will send an “Exit GeoFence” event to New SkyRouter when exiting a GeoFence.
- GeoFence Enabled:** When checked the GeoFence will be enabled on the device.

NAME

A unique identifier for the GeoFence, the name can be viewed both in the Manager application and on the device.


EDIT

Edits existing GeoFences. Select a GeoFence name from the “Edit” drop-down menu to edit an existing GeoFence.

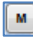
PROFILE

The Profile which a GeoFence is applied to, select a Profile number from the drop-down menu. GeoFences will only be active when the profile they are enabled for is currently active.

DRAW

Right click the map to draw a GeoFence, the crosshair icon  will appear. Left click the map with the crosshair to create a GeoFence point. Right click the map again to complete the GeoFence and exit draw mode.

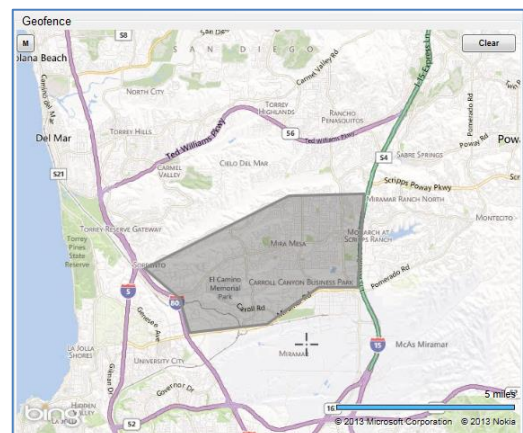
MAP STYLES

There are two options for map styles on the GeoFencing tab; Road and Satellite. Both map styles are provided by Bing, clicking the  button will change between the available map styles.

ROAD

Road view is the default map view and displays vector imagery of roads, buildings, and geography.

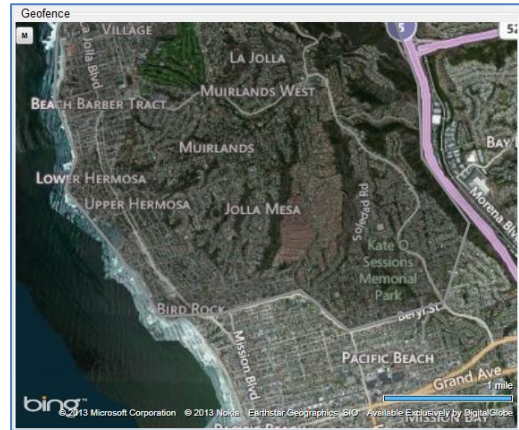
It is usually easier to see GeoFences on the Road map style due to the use of color in the maps.



SATELLITE

Satellite maps provide a real-world experience, they incorporate satellite images and roads, names are then layered on-top of the images.

Satellite maps tend to be more accurate; satellite images may not be updated for several months until new satellite imagery data has been made available.



MOTION

DISCLAIMER: Except for those express warranties set forth in the Equipment purchase & Service Agreement for this product; all warranties relating to this product are expressly disclaimed, including, without limitation, warranties of merchantability and fitness for a particular purpose. Any liability shall be limited exclusively to repair or replacement of this Product. Under no circumstances shall liability exist for incidental, consequential, or special damages related to the handling or use of this Product. This Product should be handled and used in strict accordance with the User Manual accompanying this Product.

This Product includes a “non-movement” feature which may be used to alert parties monitoring a user’s location as to whether a user has changed position after a certain amount of time (please see User Manual for specific details and instructions on use). The non-movement feature may be subject to malfunction due to user error, product defects, interrupted service or force majeure and therefore should be used in addition to, and not instead of, other reasonable safety precautions. The use of, and reliance on, the non-movement feature is at your own risk.

The HawkEye (PT) Plus has a built-in Motion sensor which is used for the Mandown feature.

NOTE: Please make sure Motion events are enabled for the active tracking Profile (see “Profiles” section).

DETECTION

When enabled (see “Profiles” section) the HawkEye (PT) Plus monitors the embedded Motion sensor constantly to determine if Motion is occurring.

SENSITIVITY

Determines the level of movement necessary to trigger

Motion

IMPORTANT: Please make sure motion events are enabled for the active tracking profile.

Detection

Sensitivity: Low Medium High

Sensitivity values determine if motion has occurred.
High sensitivity indicates Mandown is less likely to trigger.

Mandown

Mandown Enabled: Yes No

Mandown Trigger Timer: (3 - 1092 Minutes)

Length of time in which motion does not occur.

Mandown Countdown Prompt: (30 - 65535 Seconds)

How long the “Are You OK?” prompt is displayed before mandown activates.

Enable Mandown Device UI Control

the motion sensor; available values:

- Low – Motion sensor is least sensitive, more movement required to prevent Mandown
- Medium – (Default)
- High – Motion sensor is most sensitive; less movement required to prevent Mandown

MANDOWN

Mandown is a Motion feature that detects if the user has stopped moving and responds to SkyRouter when movement has not occurred for a configured amount of time.

How it works:

- Once Mandown is enabled the Mandown “Trigger Timer” starts to count down.
 - If movement occurs before the “Trigger Timer” expires; the “Trigger Timer” is reset.
 - If movement does not occur before the “Trigger Timer” expires; the device will enter the “Mandown Countdown” state.
- Once the device enters the “Mandown Countdown” state the device will show a prompt on the screen asking “Are You OK?” and an audible beep is heard.
 - If the user responds indicating that they are OK the Mandown Trigger Timer is reset.
 - If the user does not respond the device will enter the Mandown state.
- Once the Mandown state is reached the device will emit a siren noise continuously, the device will also enter Quick Position Mode.
 - Mandown state must be manually cancelled.

MANDOWN ENABLED

Enables the Mandown feature; select “Yes” radio button to enable select “No” radio button to disable.

MANDOWN TRIGGER TIMER

Length of time which motion does not occur; the device will enter Mandown Countdown state if the device does not move for this amount of time (NOTE: device movement must satisfy the sensitivity setting.)

MANDOWN COUNTDOWN PROMPT

Once the Mandown “trigger timer” has been satisfied (without any movement); the device will display a prompt on the screen “Are You OK?” and an audible beep is heard, if the user selects “Yes” the Mandown “trigger timer” is reset; if the user does not select “Yes” or selects “No” the Mandown state is triggered.

ENABLE MANDOWN DEVICE UI CONTROL

Enables the Mandown icon in the HawkEye PT Plus device menu; this enables the user to make changes to the Mandown feature directly from the device.

APPENDIX A – REVISION HISTORY

Date	Revision	By	Description
06/25/2013	1.0	MP	HawkEye (PT) Plus Manager User Guide
02/05/2014	1.2	MP	Changed brandings, Motion feature included/changed, minor updates
03/21/2017	1.3	AN	Updated address

SERVICE ACTIVATIONS

Blue Sky Network handles all activation requests. An activation request can be submitted through our website, the link is shown below. You should receive an immediate email confirmation that your request has been submitted and another email once the requested services have been activated. Please make sure your contact details are accurate, this is how we contact you if there are any problems processing your request.

<http://www.blueskynetwork.com/Support/ActivationForm.php>

SUPPORT

If you need further assistance please do not hesitate to contact us either via email or phone. Thank you for using Blue Sky Network.

Blue Sky Network
5333 Mission Center Rd. Suite 220
San Diego, CA 92108
Phone: +1 858 551 3894 | Fax: +1 858 225 0794
E: support@blueskynetwork.com | W: www.blueskynetwork.com



Blue Sky Network, 1298 Prospect Street, Suite 1D, La Jolla, CA 92037

Phone: +1 858 551 3894 | Fax: +1 858 225 0794

E: support@blueskynetwork.com | W: www.blueskynetwork.com