

SKYLINK TOC BOX

QUICK START GUIDE

PLEASE READ BEFORE DEPLOYMENT



SAFETY INSTRUCTIONS



WARNING: Risk of electrical shock, fire, personal injury or death.

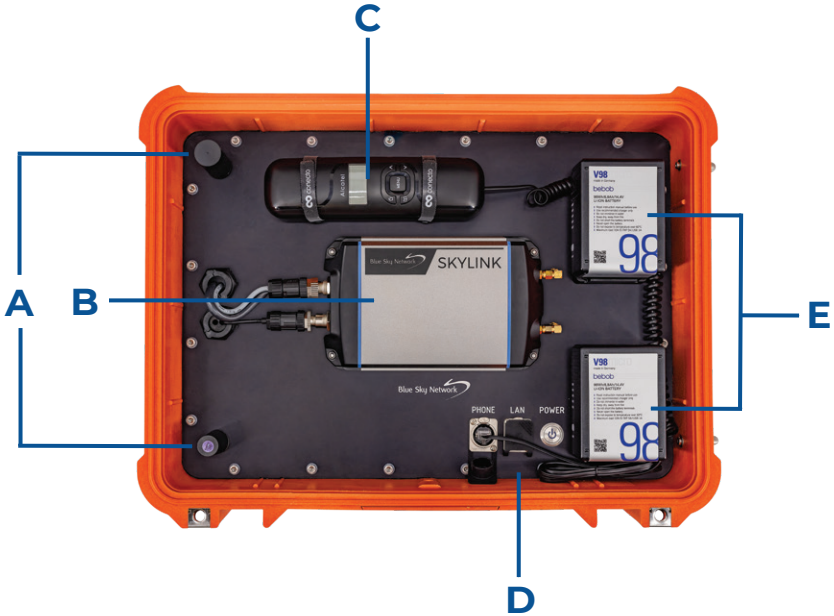
- Do not use the power supply without proper grounding (protective earth). Use the terminal on the input block for earth connection. Ensure that protective earth is connected according to all local and national codes and regulations!
- Turn power off before working on the device; protect against inadvertent repowering.
- Verify that the wiring is correct by following all local and national codes.
- Do not modify or repair the unit.
- Do not open the electronic units (e.g., power supply), as high voltages are present inside.
- Use caution to prevent any foreign objects from entering into the housing.
- Do not use in wet locations or in areas where moisture or condensation can be expected while cover is not mounted.
- Do not touch during power on and immediately after power off. Hot surface may cause burns.

TECHNICAL DETAILS

- Size: 19.8 x 15.3 x 7.5 in. (50.2 x 39.0 x 19.0 cm)
- Weight: 23.8 lb. (10.8 kg)
- External power supply/charger:
 - Input voltage: 90-264 VAC
 - Output voltage: 16.8 VDC
- Vehicle input voltage: 12 VDC (includes battery protection)
- 2x 98Wh detachable batteries with travel case
- Operational temperature excluding batteries: -40°C to +70°C
- Operational temperature including batteries: -20°C to +55°C
- IP67 protection class (closed lid)

INTERFACES

- A. Antennas
- B. Dual Mode Data Gateway
- C. Handset
- D. On/Off, phone, LAN
- E. Detachable batteries
- F. External connectors:
 - CHARGE
 - 12V DC IN
 - PHONE
 - LAN



POWER

The SkyLink TOC BOX can be used with two power sources.

Main Source

98Wh onboard batteries. The batteries are the main power source for the case. Charging them while the system is running will extend the recharge time.

Vehicle

The system is connected to a 12V DC vehicle outlet via the 12V DC IN connector. When using the case with a vehicle, it is recommended to remove the batteries to reserve their power levels, as the batteries are the primary power source.

NOTE: The batteries will not charge with the vehicle cable connected.

Charging the Batteries

Connect the external power supply to the CHARGE connector on the case to charge the batteries. Press the small button next to the LEDs on the battery to view charge level.

NOTE: Do not use the system with ONLY the external power supply.

COMMISSIONING THE CASE

1. Connect the power supply:
 - a) Insert batteries, or
 - b) Insert batteries and connect AC/DC power cable, or
 - c) Connect 12V DC cable to a vehicle
2. Press the power button.
3. After approximately 2 minutes, the system will register to the Iridium satellite network, or a cellular network. Obstacle clearance is important, see below:

IMPORTANT!

Ensure the TOC BOX is orientated with the satellite antenna pointing skyward and there is a maximum of 8.2° obstruction from ground-based obstacles. Especially obstacles on the North/South axis.



SKYLINK DATA GATEWAY

Connecting to Device Wi-Fi

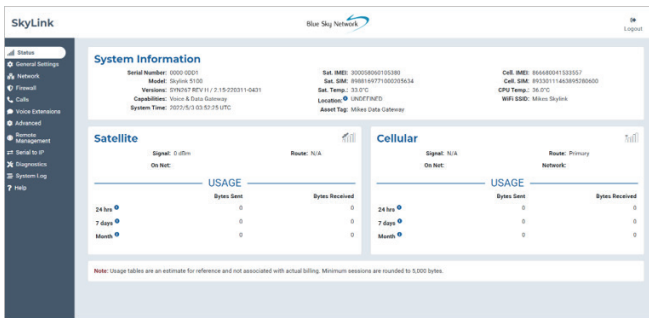
Use the WiFi SSID and password found on the label inside the SkyLink device box. If using an Ethernet cable with your SkyLink device, plug the cable into one of the LAN ports and your device will automatically be configured via DHCP.

SkyLink Device Interface & Cloud Services Portal

The SkyLink ecosystem uses two platforms for seamless device management and configuration.

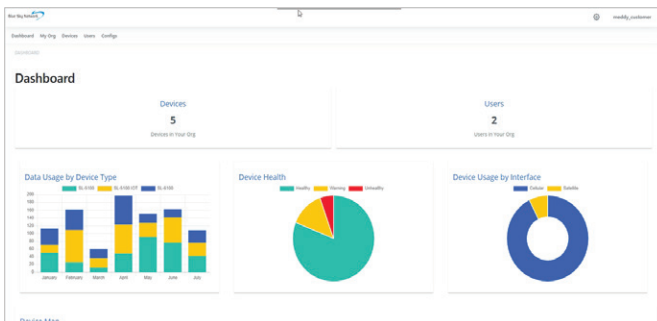
1. **Device Web User Interface.** Use when you would like to view or make changes to a single device. Log in by connecting to device Wi-Fi and typing in the SkyLink IP address: 192.168.111.1.

Default login and password is **'admin'**. Upon logging in, you will automatically be directed to the Status screen.



2. **Cloud Services Portal.** Use to manage and configure a fleet of devices. Log in by opening a web browser and typing in the SkyLink Cloud Services URL: <https://portal.skylink.net/login>.

Login information will be sent to you via email. Upon logging in, you will be automatically directed to a dashboard page.



For more information on the SkyLink Data Gateway, please refer to the SkyLink User Guide.

Blue Sky Network



www.blueskynetwork.com

SKYLINK-TOC-BOX- QUICK-START-GUIDE-V1.0

For customer use only. Not intended for further distribution.