



HE7200

Firmware Upgrade Guide

Document Part# 200606

Version 2.1

March 2019

Mathew Pearson, Chris Rice

TABLE OF CONTENTS	
NOTICE.....	3
IMPORTANT INFORMATION	4
FIRMWARE UPGRADE	5
PREREQUISITES	5
PREPARATION	5
CONFIGURE UPGRADE TOOL.....	6
LOAD NEW BOOTLOADER (IF APPLICABLE):	7
LOAD NEW FIRMWARE:.....	8
VERIFY UPDATE	9
APPENDIX A– PROGRAMMING CABLES SCHEMATICS	10
APPENDIX A – REVISION HISTORY	11
ADDITIONAL ASSISTANCE?	12

NOTICE

This guide is published and copyrighted by Blue Sky Network (BSN). All information and specifications in this document are subject to change without notice. Nothing in this document is intended to create additional or separate warranties or guarantees.

© 2015 Blue Sky Network, All Right Reserved.



Blue Sky Network, 5333 Mission Center Rd., Suite 220, San Diego, CA 92109

Phone: +1 858 551 3894 | Fax: +1 858 551 3891

IMPORTANT INFORMATION

Please refer to the User/Installation guides for details regarding schematics and installation. Also, refer to the user guides for instructions on how to operate the equipment. This guide should only be used as a reference for the firmware upgrade process.

The most recent support documentation and downloads are available at:

<https://support.blueskynetwork.com>

The most recent firmware is available by request from support@blueskynetwork.com

FIRMWARE UPGRADE

This document illustrates the necessary steps to perform a firmware update on the Blue Sky Network HawkEye 7200 tracking device.

PREREQUISITES

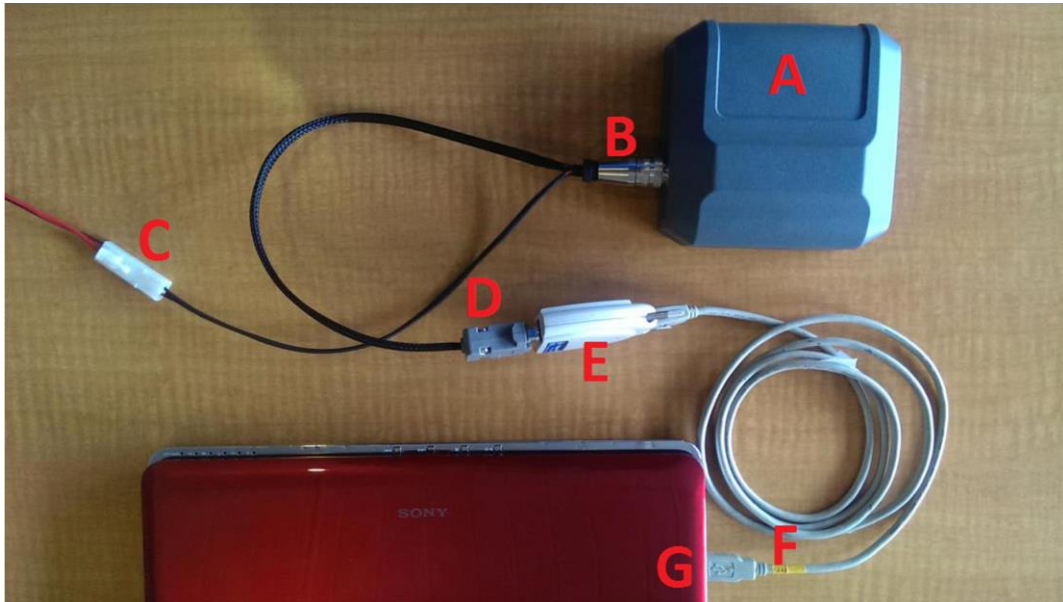
Make sure you have the following items available before you begin:

1. HE7200 Programming Cable – Part # 200681.
 - a. Available for purchase from Blue Sky Network.
 - b. Build your own cable – see wiring harness schematics in this document.
2. Download the HE7200 Firmware Upgrade Kit (available by request from support@blueskynetwork.com or by download at support.skyrouter.com). Firmware Upgrade Kit contains the following:
 - a. Firmware Updater application ('Firmware Updater.exe')
 - b. Firmware file (.ase extension)
3. A computer with a serial port, or ...
 - a. USB to Serial Port adapter. This type of adapter is fairly common, however not all of them will work for this procedure. The adapter we use is the Edgeport/1 (available from Blue Sky Network).
4. The HE7200 Product you wish to upgrade.

PREPARATION

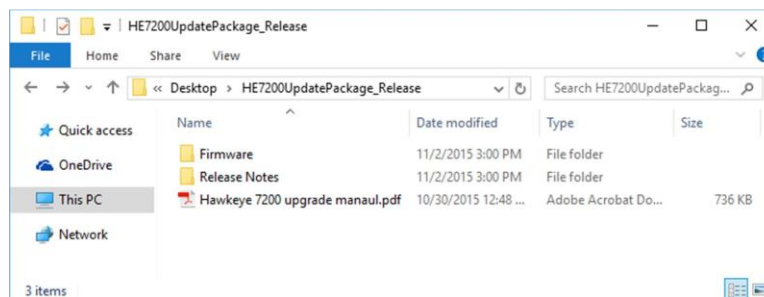
1. Connect the HawkEye 7200 (A) to the HE7200 programming cable 14-pin connector (B).
2. Connect the HE7200 programming cable serial connector (D) to either:
 - a. The computer serial port (G)
 - b. The USB/Serial convertor (E)
 - i. Connect the USB to the computer (F)
3. Connect power to the HE7200 programming cable (C) and supply power to the cable
4. Power on the HE7200 device in 'Programming Mode'

- a. Press and hold the QPOS button and then press the power button. All LED's on the front of the device will remain ON confirming Programming Mode has been initiated.



CONFIGURE UPGRADE TOOL

1. Un-zip the "Upgrade Kit" to a location on your computer,



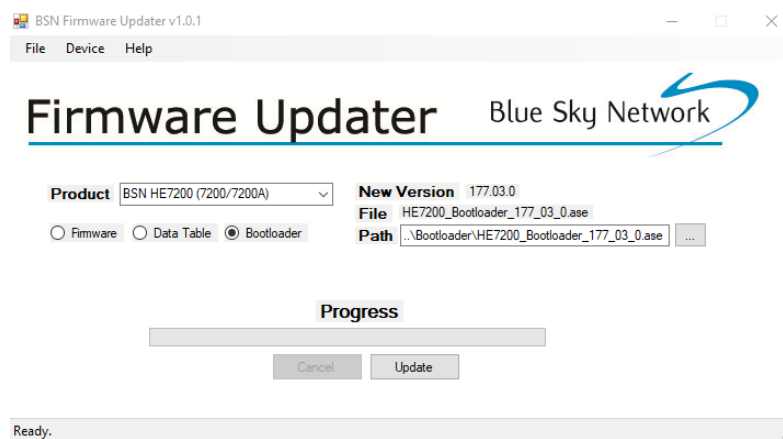
2. Change to the 'Firmware' directory.
3. Run the 'Firmware Updater' executable.
4. From the Device Menu select the 'Setup' option. Select the serial or USB port which you have connected your HE7200 device. It is not necessary to further modify the serial port settings such as baud rate etc. since the Firmware Updater will automatically control these settings.



LOAD NEW BOOTLOADER (IF APPLICABLE):

Not every firmware release includes a bootloader update. If a folder called 'Bootloader' is present in the upgrade package, perform the bootloader upgrade first before proceeding to the firmware update.

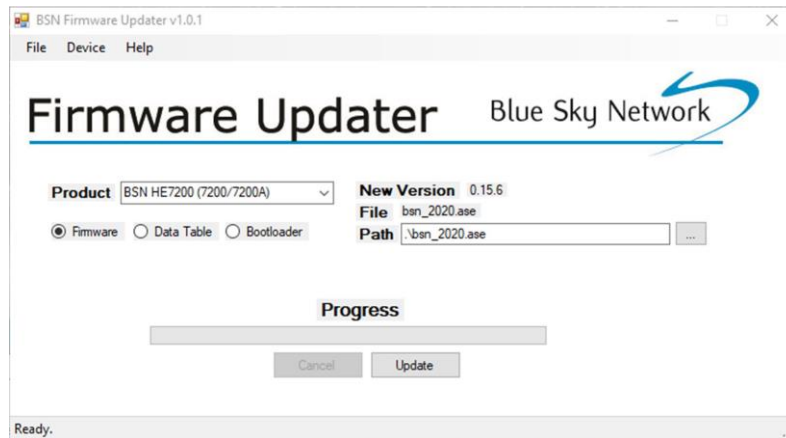
1. Un-zip the "Upgrade Kit" to a location on your computer,
2. Change to the 'Firmware' directory.
3. Run the 'Firmware Updater' executable. Locate and select the Bootloader file (.ase extension)
4. Toggle the radio button to 'Bootloader'



5. Click the 'Update' button to begin the bootloader update. The progress bar will start filling indicating the update progress
6. Once the bootloader update is complete the HE7200 will automatically reboot and all LEDs will turn off. At this point it is safe to unplug the HE7200 device. The Bootloader Update is now complete.

LOAD NEW FIRMWARE:

1. Un-zip the "Upgrade Kit" to a location on your computer,
2. Change to the '\Firmware' directory.
3. Run the 'Firmware Updater' executable. Locate and select the Firmware file (.ase extension):

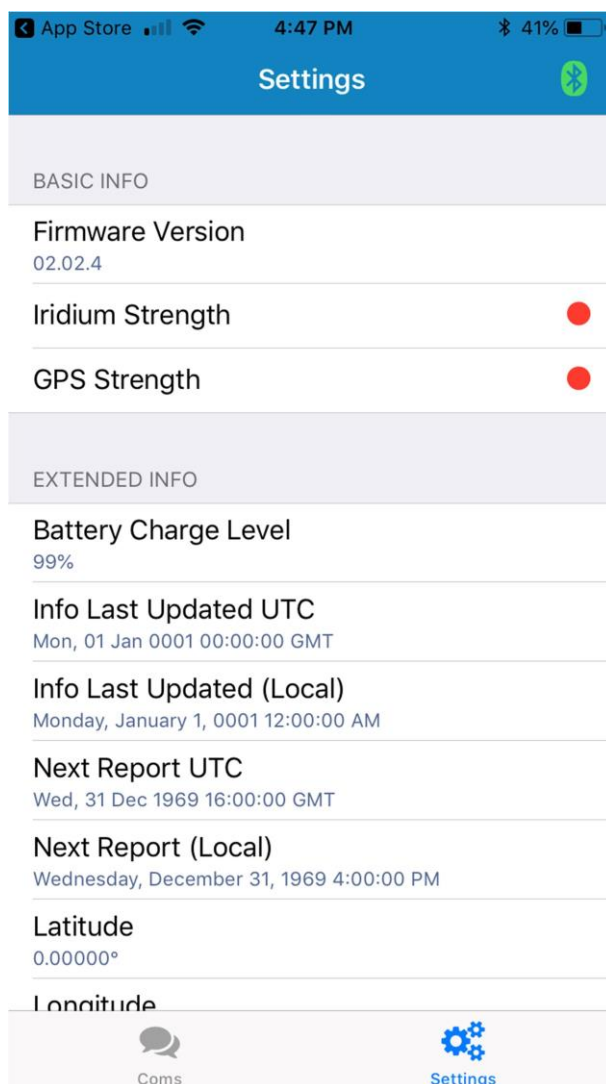


4. Click the 'Update' button to begin the firmware update. The progress bar will start filling indicating the update progress
5. Once the firmware update is complete the HE7200 will automatically reboot and all LEDs will turn off. At this point it is safe to unplug the HE7200 device. The Firmware Update is now complete.

VERIFY UPDATE

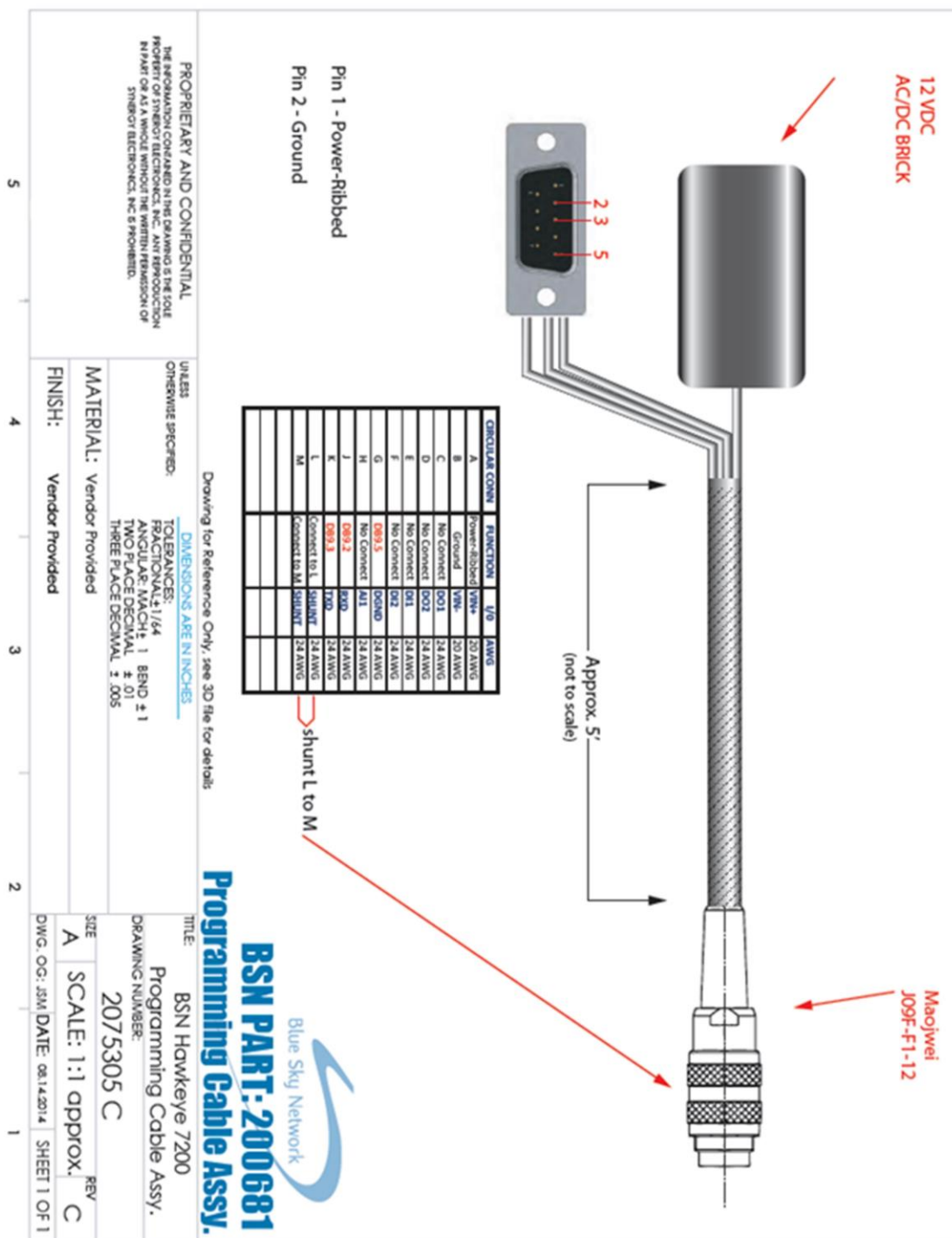
The best way to verify the firmware version on HE7200 is to use the Hawkeye Link Application (available at the iOS App Store and the Android Play Store).

1. Pair the HE7200 to the smartphone via Bluetooth. (For a step-by-step guide on how to connect please refer to Hawkeye 7200 User Guide)
2. Open the HawkEye Link App
3. Connect to the Hawkeye 7200 device
4. Within a few seconds, the firmware version should be updated to the expected version.
5. The bootloader can also be verified on the same screen farther down the page



(Note that the version shown in this picture may not reflect the latest firmware version. Please check on [Support website](#) for the latest released version.)

APPENDIX A- PROGRAMMING CABLES SCHEMATICS



APPENDIX A – REVISION HISTORY

Date	Revision	By	Description
2015-11	1.0	MP	Initial version HawkEye 7200 Firmware Update Guide
2016-01-19	1.1	MP	Updated wiring diagram, added Revision History.
2018-04-24	2.0	CR	Updated to reflect current software versions.
2019-03-22	2.1	CR	Added section related to Bootloader.

ADDITIONAL ASSISTANCE?

Please do not hesitate to contact us via email or on the telephone number listed below. Thank you for choosing Blue Sky Network.



Blue Sky Network, 5333 Mission Center Rd., Suite 220, San Diego, CA 92109

Phone: +1 858 551 3894 | Fax: +1 858 551 3891

E: support@blueskynetwork.com | W: www.blueskynetwork.com