



HE7200A-BB2327

Firmware Upgrade Guide

Document Part# 200807

Version 2.0

May 2017

TABLE OF CONTENTS

Notice 3

Important Information 4

Firmware Upgrade 5

 Prerequisites 5

 Preparation..... 6

 Configure Upgrade Tool..... 7

 Load new firmware: 7

 Verify Update..... 8

Appendix A– Programming Cables Schematics 9

Appendix A – Revision History..... 10

Additional Assistance? 11

NOTICE

This guide is published and copyrighted by Blue Sky Network (BSN). All information and specifications in this document are subject to change without notice. Nothing in this document is intended to create additional or separate warranties or guarantees.

© 2017 Blue Sky Network, All Right Reserved.



Blue Sky Network, 5333 Mission Center Rd., Suite 220, San Diego, CA 92109

Phone: +1 858 551 3894 | Fax: +1 858 551 3891

E: support@blueskynetwork.com | W: www.blueskynetwork.com

IMPORTANT INFORMATION

Please refer to the User/Installation guides for details regarding schematics and installation. Also, refer to the user guides for instructions on how to operate the equipment. This guide should only be used as a reference for the firmware upgrade process.

The most recent support documentation and downloads are available at: <https://support.skyrouter.com>

FIRMWARE UPGRADE

This document illustrates the necessary steps to perform a firmware update on the Blue Sky Network Hawkeye 7200A tracking device.

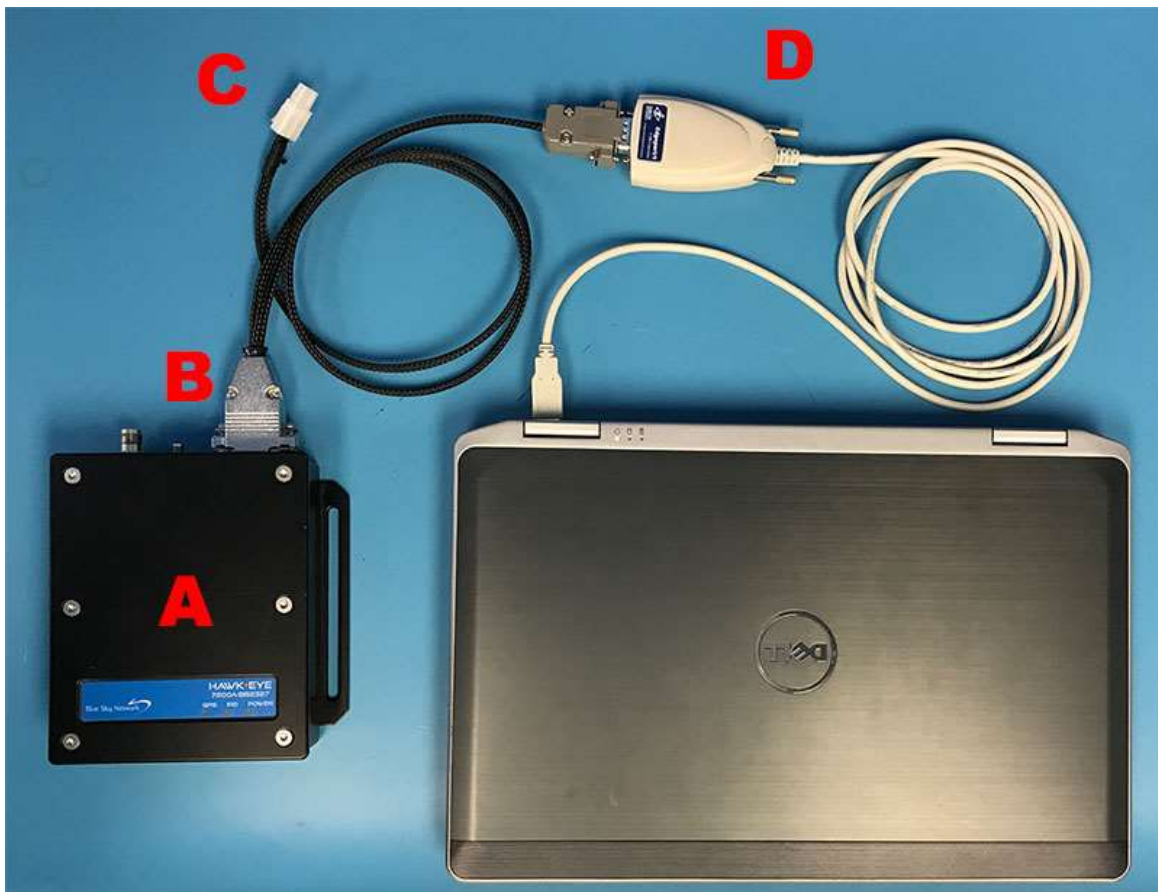
PREREQUISITES

Make sure you have the following items available before you begin:

1. HE7200A-BB2327 Programming Cable – Part # 200890-10006.
 - a. Available for purchase from Blue Sky Network.
 - b. Build your own cable – see wiring harness schematics in this document.
2. Download the HE7200A-BB2327 Firmware Upgrade Kit (available by download at support.skyrouter.com). Firmware Upgrade Kit contains the following:
 - a. Firmware Updater application ('FirmwareUpdater.exe')
 - b. Firmware file (.ase extension)
3. A computer with a serial port, or ...
 - a. USB to Serial Port adapter. This type of adapter is fairly common, however not all of them will work for this procedure. The adapter we use is the Edgeport/1 (available from Blue Sky Network).
4. The HE7200A-BB2327 Product you wish to upgrade.

PREPARATION

1. Connect the HawkEye 7200A **(A)** to the HE7200A-BB2327 programming cable DB15 connector **(B)**.
2. Prepare to connect power to the HE7200A-BB2327 programming cable **(C)** and supply power to the cable. DO NOT POWER THE UNIT ON. Power supplied must be between 10.5v – 32v.
3. Connect the HE7200A-BB2327 programming cable serial connector **(D)** to either:
 - a. The computer serial port
 - b. The USB/Serial convertor
 - i. Connect the USB to the computer



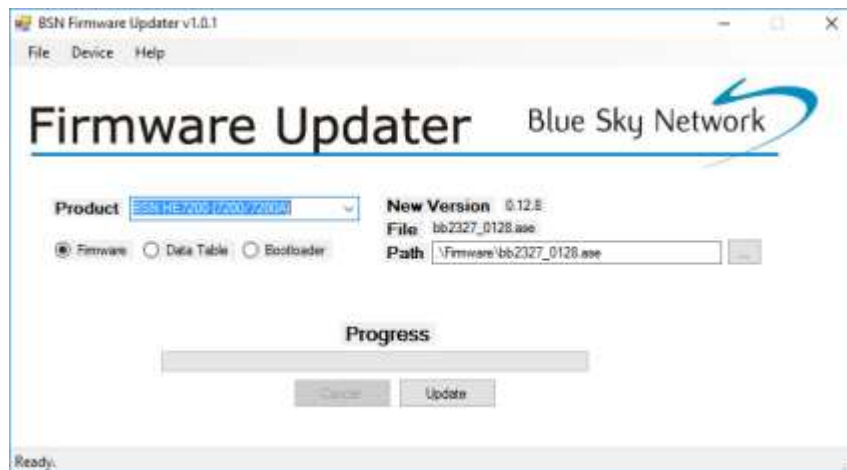
CONFIGURE UPGRADE TOOL

1. Un-zip the "Upgrade Kit" to a location on your computer,
2. Change to the '\Firmware' directory.
3. Run the 'Firmware Updater' executable.
4. From the Device Menu select the 'Setup' option. Select the serial or USB port which you have connected your HE7200A-BB2327 device. It is not necessary to further modify the serial port settings such as baud rate etc. since the Firmware Updater will automatically control these settings.



LOAD THE NEW FIRMWARE:

1. Un-zip the "Upgrade Kit" to a location on your computer,
2. Change to the '\Firmware' directory.
3. Run the 'Firmware Updater' executable. Locate and select the Firmware file (.ase extension):

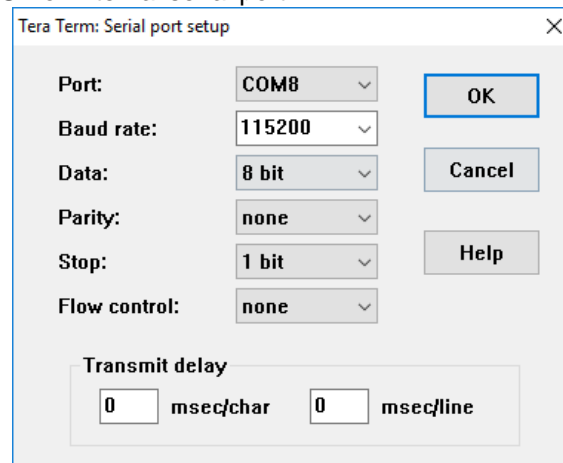


4. **TIME SENSITIVE**: Power the HE7200A-BB2327 unit on and within 2 seconds complete the next step.
5. Click the 'Update' button to begin the firmware update. The progress bar will start filling indicating the update progress
6. Once the firmware update is complete the HE7200A-BB2327 wait 30 seconds and power off the unit. At this point it is safe to unplug the HE7200A-BB2327 device. The Firmware Update is now complete.

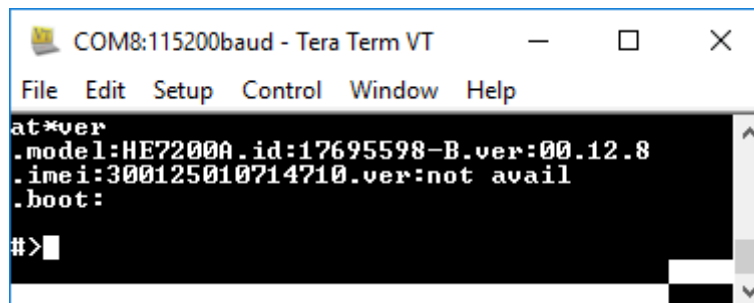
VERIFY UPDATE

Download and install a serial terminal application capable of communicating over the serial port. We recommend Tera Term.

1. Configure the terminal application with the following settings. Select the COM port that correlates to your attached serial USB or internal serial port.

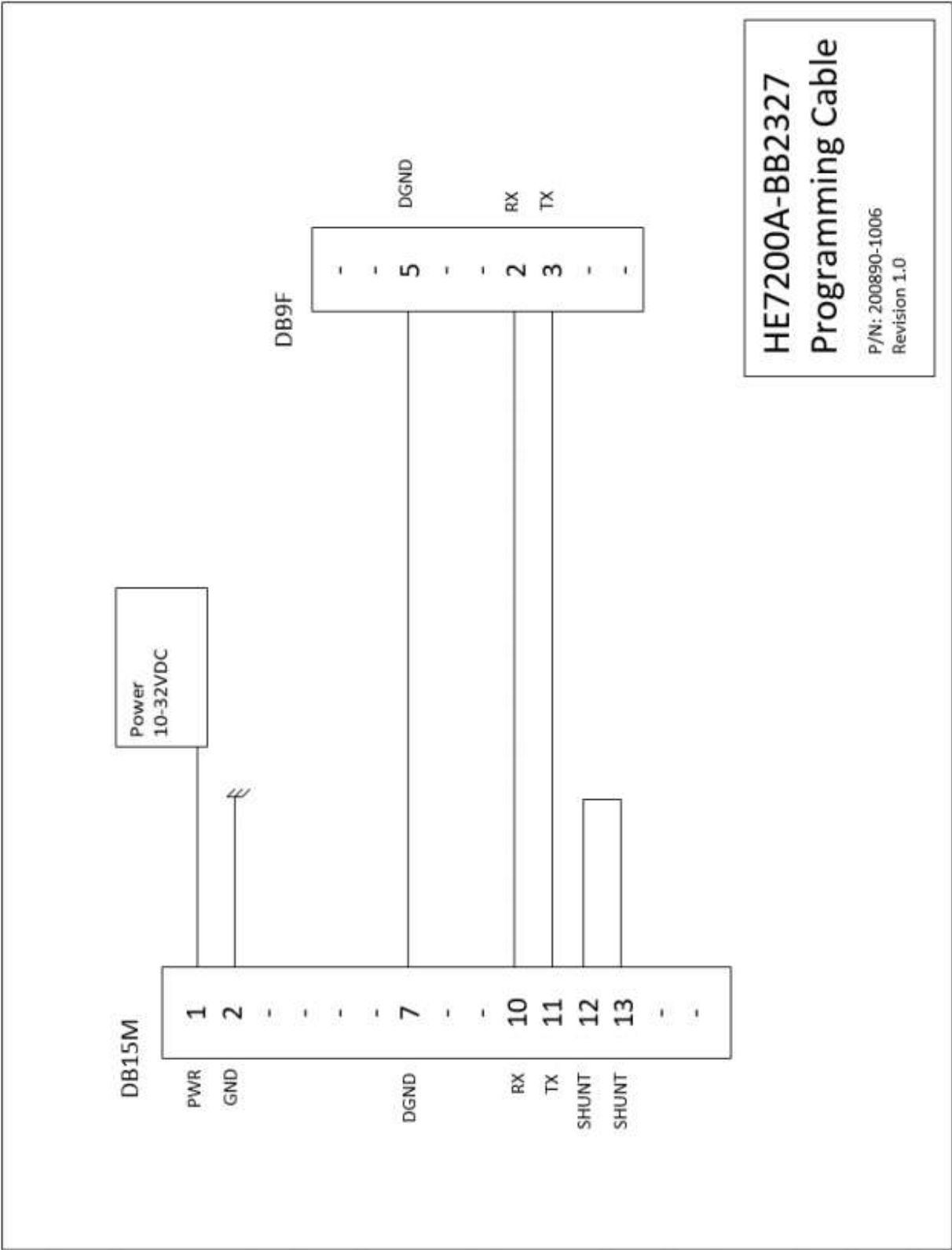


2. Power on the Hawkeye 7200A unit.
3. Once booted enter the text AT*VER into the terminal and hit the return key.
4. A message like the following one will appear with a line that contains a ".ver" This is the firmware version loaded.



(Note that the version shown in this picture may not reflect the latest firmware version. Please check on [Support website](#) for the latest released version.)

APPENDIX A- PROGRAMMING CABLES SCHEMATICS



APPENDIX A – REVISION HISTORY

Date	Revision	By	Description
2017-05-25	2.0	IR / CR	Initial revision of the document
2018-05-02	2.1	CR	Specify power requirements of unit

ADDITIONAL ASSISTANCE?

Please do not hesitate to contact us via email or on the telephone number listed below. Thank you for choosing Blue Sky Network.



Blue Sky Network, 5333 Mission Center Rd., Suite 220, San Diego, CA 92109

Phone: +1 858 551 3894 | Fax: +1 858 551 3891

E: support@blueskynetwork.com | W: www.blueskynetwork.com